

- ✓ Online axle load and vehicle weight measurement.
- ✓ Locating places and number of loading/unloading.
- ✓ Detecting "underhand" cargo.
- ✓ Avoiding fines for exceeding allowed axle load.
- ✓ Used within telematics systems and as stand-alone solution.



GNOM DDE

- ✓ Pressure sensor for vehicles with pneumatic suspension system.
- ✓ Installed in air line or pneumatic cushion.
- ✓ Measures pressure of compressed air in pneumatic system.
- ✓ Simple analog output – can be connected to any GPS-tracker with voltage input.

Inlet pressure	0...0.8 MPa
Inaccuracy	up to 2.5%
Output signal	0.25...3.80 V



GNOM DP, GNOM DP CAN

- ✓ Shift sensor for vehicles with spring suspension system.
- ✓ Installed on rear axle or rear bogie of truck and/or semi-trailer.
- ✓ Measures suspension's shift when vehicle load changes.
- ✓ Simple analog output – can be connected to any GPS-tracker with voltage input.

Inaccuracy	up to 5.0%
Output signal – GNOM DP model	1.54...3.46 V
Interface – GNOM DP CAN model	CAN j1939

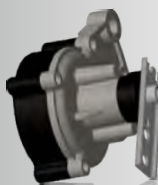


GNOM S7 DDE



- ✓ Pressure sensor for vehicles with pneumatic suspension system.
- ✓ Installed in air line or pneumatic cushion.
- ✓ Measures pressure of compressed air in pneumatic system.
- ✓ Wireless data transfer over Bluetooth 4.X.

Inlet pressure	0.1...1.4 MPa
Inaccuracy	up to 1.0%
Power-supplied form built-in battery	5 years
Wireless signal range	10 – 50 m



DNOM S7 DP



- ✓ Shift sensor for vehicles with spring suspension system.
- ✓ Installed on rear axle or rear bogie of truck and/or semi-trailer.
- ✓ Measures suspension's shift when vehicle load changes.
- ✓ Wireless data transfer over Bluetooth 4.X.

Inaccuracy	up to 1.5%
Power-supplied form built-in battery	5 years
Wireless signal range	10 – 50 m



phone +420 910 122 429
 WhatsApp +420 704 067 474
 e-mail: sales@jv-technoton.com
 www.jv-technoton.com

